

Disabled Persons Toilet Alarms



C-TEC's range of disabled persons toilet alarms and single zone call systems are among the best-selling in the UK. Available in two popular kit formats (items can be purchased separately for more complex applications), they offer a reliable and cost-effective solution to calling for urgent assistance. To operate, the user simply pulls the cord of a ceiling pull to activate a light and sounder outside the room. Other options available include remote sounders (for staffed areas), wall call points, overdoor lights and multi-zone call controllers for larger installations - see reverse for details.

- Part of C-TEC's tried and trusted 800 Series of Call Systems.
- All components fit standard 25mm back boxes. Ceiling pull is surface mountable.
- NC951 Standard and NC950 Economy kits include everything required for a compliant, reliable and easy to use disabled persons toilet alarm (except cable and fixings).
- Open sided triangular ceiling pull offers ease of use for the infirm.
- Attractive compact design - NC941 combined single zone call controller and power supply fits on one double gang plate and includes an integral buzzer, reset button and LED.
- Eye-catching kit boxes are an excellent sales aid for shop windows, trade counters, etc.
- Simple to install - four core stranded security cable is ideal for most installations.
- Wide range of ancillary devices including remote sounders, overdoor lights & reset points.
- Disabled WC sticker included in all kits.
- Attractive NC944 four zone call controllers available for larger installations (max. two NC944's per NC930 12V power supply).
- All components normally available ex-stock.

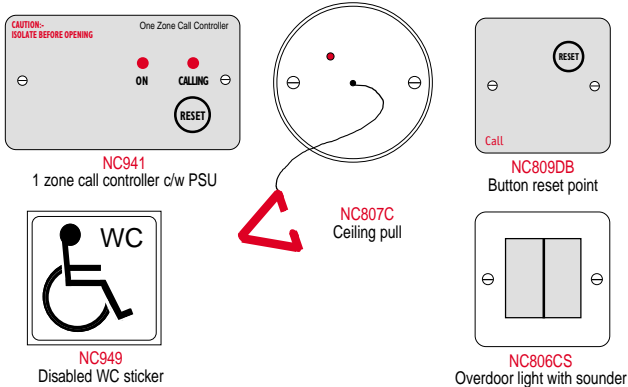


DISABLED PERSONS TOILET ALARMS / SINGLE ZONE CALL SYSTEMS

Single zone call systems can be assembled from a variety of 800 Series components. Although suitable for a wide range of applications, one of the most common uses for them is as a disabled persons toilet alarm in public buildings.

Two disabled persons toilet alarm kits are available, each containing everything required for a compliant, reliable and easy to use disabled persons toilet alarm (except cable and fixings). Attractively packaged (making them an excellent sales aid for trade counters, shop windows, etc), the contents of each kit are detailed below.

NC951 STANDARD KIT



NC950 ECONOMY KIT

As above, but excluding the NC809DB Button Reset Point and the NC806CS overdoor light with sounder.

COMPONENT DESCRIPTIONS

NC941 One Zone Call Controller c/w 12V PSU: Used to provide power to the system, the NC941 includes an integral buzzer and a zonal alarm LED to provide audible and visual indication of a call. An on-board reset button is also provided for cancelling calls (this facility can be disabled if the unit is to be sited away from the WC).

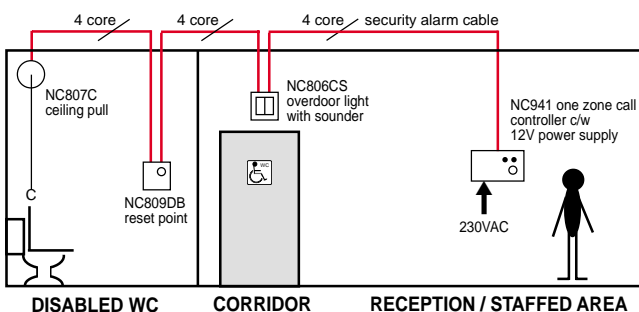
NC807C Ceiling Pull Unit: Used to generate a call on the system, the NC807C incorporates a confidence light, a six foot cord and an open sided triangular pull for ease of use by the infirm.

NC806CS Overdoor Light with Sounder: Usually located above the door of the WC, the NC806CS provides audible and visual indication of a call. It's ultra-bright LEDs and 'V' shaped design make it highly visible from a distance.

NC809DB Reset Button: Used to cancel calls generated via the NC807C ceiling pull. Usually sited inside the WC or just outside by the door.

NC949 Disabled WC Sticker: A gloss finished, permanent vinyl sticker.

TYPICAL WIRING CONFIGURATION



The above diagram shows typical wiring for the NC951 Standard system. If using the NC950 Economy system, the reset point and overdoor light with sounder should be omitted and the NC941 call controller/PSU should be sited directly outside the WC to provide a reset facility and audible and visual indication of calls. **Please note:** the call indication levels provided on the NC941 may not be loud enough for certain applications. If in doubt, use the Standard kit.

In addition to the parts contained in the Standard and Economy kits (all of which can also be purchased separately), a variety of other 800 Series components can be used to create, expand or enhance disabled persons toilet alarms and single zone call systems. These include:

NC802DB Standard Call Point: With a call button, confidence light, reset button and remote socket, the NC802DB can be used instead of a ceiling pull to trigger a call. Ideal for use in interview room call systems, etc, the NC802DB is not recommended for use in disabled persons toilet alarms as it's on-board reset facility means it can be inadvertently reset by the caller.

NC894DKB Isolatable Monitoring Point: Supplied with a pair of magnetic door contacts, the NC894DKB triggers a call when a door, window or cupboard is opened. The unit includes an isolation keyswitch, confidence light and reset button. Ideal for many security applications.

NC806C Overdoor Light: Similar to the NC806CS overdoor light supplied in standard and economy kits but without an internal sounder.

NC888D Remote Sounder: A low current beeper with an insistent tone, supplied on a single gang plate. Can be used to increase sound levels in large or noisy sites.

NC887D Switchable Sounder: Also ideal for increasing sound levels in large or noisy sites, this device can be turned on and off for even greater flexibility.

If opting to create your own disabled persons toilet alarm using any combination of the above components, the following points should be considered:

- (1) A disabled persons toilet alarm should allow the user to call for help via an easily operated device inside the WC.
- (2) It should confirm a call has been registered by lighting a confidence light at the calling device to reassure the user help is on it's way.
- (3) It should inform staff that a call has been made by activating a light and sounder outside the WC and, if required, by activating other lights and sounders located elsewhere in the building, such as reception areas.
- (4) It should ensure that the caller is visited by a member of staff. This can be achieved by siting the reset device inside or just outside the WC. It should not be possible to reset calls from elsewhere in the building.

MULTI-ZONE SYSTEMS

Multi-zone call systems of up to eight zones can be assembled using the **NC944 four zone call controller**.

The NC944 derives it's power from the **NC930 12V power supply** to which up to two NC944's can be connected for a maximum of 8 zones.

The NC944 includes a buzzer, four zonal alarm LEDs, a MUTE button to silence standard calls and a RESET button to globally cancel all standard calls (both MUTE and RESET can be disabled).

In addition to standard calls, the NC944 can generate a second, more urgent level of call known as an 'emergency call'. Unlike standard calls, emergency calls cannot be muted and can only be reset at the device from which they were initiated.

800 Series devices which are capable of making emergency calls include the **NC802DEB1/2 Two Button Emergency Call Point** and the **NC802DEM Magnetic Emergency Call Point**. These devices are particularly useful in applications such as nursing homes where an additional level of call is often required for staff to summon assistance.

A range of infra-red call points and ceiling receivers are also available for use with the NC944. These include the **NC802DERB Emergency Infra-Red Call Point** and the **NC302RXC Infra-Red Ceiling Receiver**. Standard and emergency calls can be triggered on these devices via the NC312 range of infra-red transmitters. NC312 transmitters are ideal for use in areas where conflicts may occur (such as GP surgeries, hospitals and DHS offices) as they allow users to remotely trigger calls in the event of an attack or dangerous situation arising.

Back-up battery kits are available for the NC941 and the NC930.

For details on larger indicator panels of up to 90 zones, or information on other 800 Series products including nursecall systems, waiting room call systems and infra-red staff protection systems, contact the Sales Office.

